

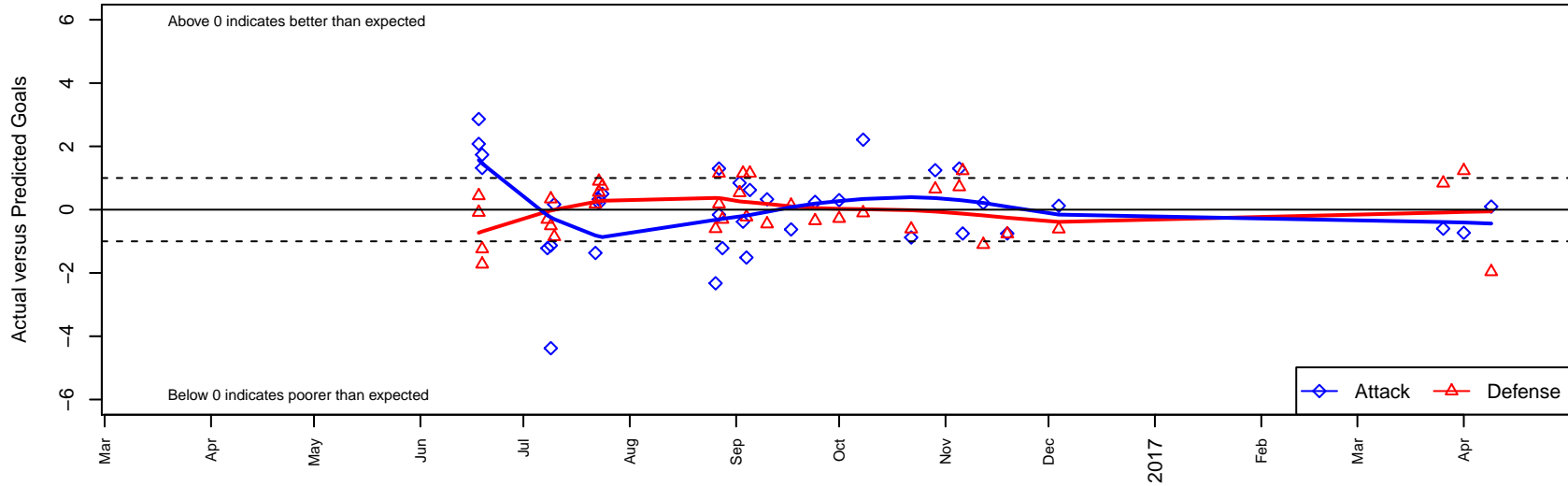
Kent United Green G03

Kent United
 Kent, WA
 G03 total strength=1065
 attack=2.11 defense=2.98
 fall league = NPSL Div 1 (03) U14

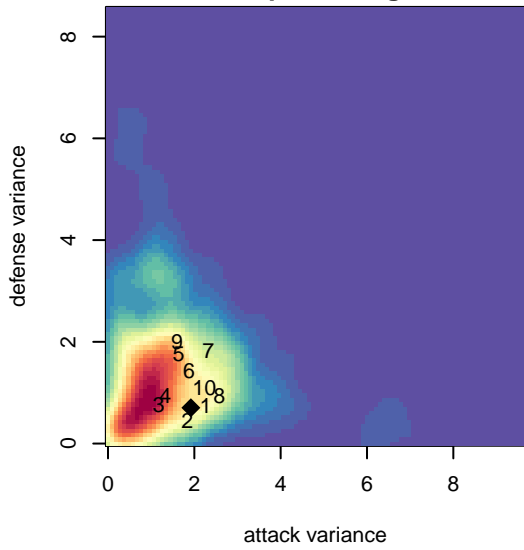
alt names used:
 Kent United G03 Green
 Kent United G03 Green
 Kent United G03 Green
 Kent United G03 Green
 Kent United G03 Green
 Kent United G03 Green
 KENT UNITED KENT UNITED G03 (GREEN)
 KU G03 Green – GU14

Venues played:
 2016 Snohomish United Invit Silver
 2016 KCC GU14 B
 2016 KCC GU14
 2016 Crossfire Select U14
 2016 River Jam Samba U14
 2016 Labor Day Cup GU14 Silver
 2016 NPSL Division 1 (03) U14
 2016 WYS Presidents Cup G03 Division 2

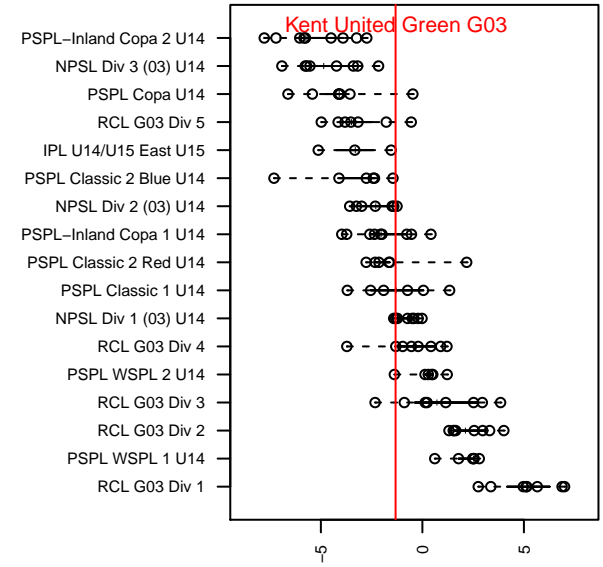
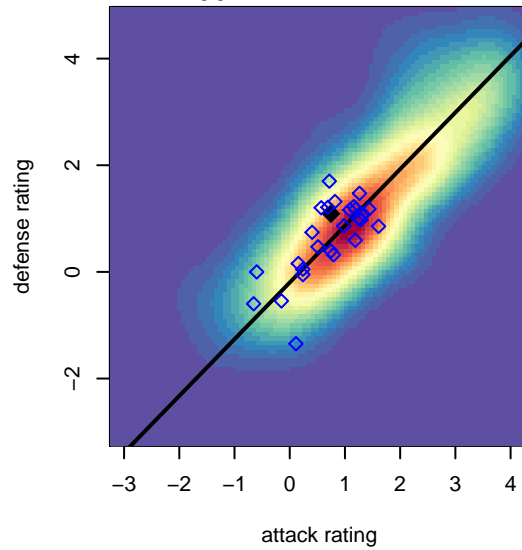
Kent United Green G03
 Dots are actual minus expected GF (blue circles) and GA (red triangles).
 Blue line is smoothed change in attack strength. Red is smoothed change in defense strength.



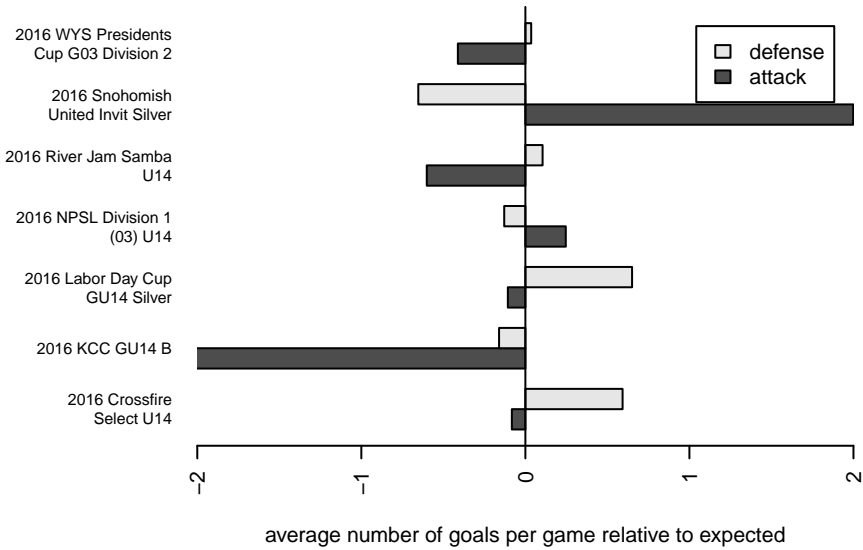
**attack and defense variance (black dot)
relative to other teams
and top 10 in region**



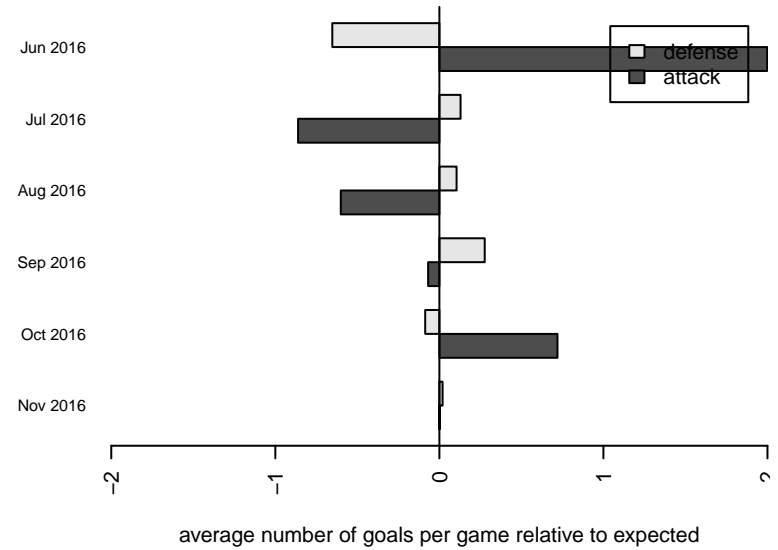
**attack and defense rating
relative to others at age
and all opponents in last 13 months**



Performance relative to 13 month average



Performance relative to 13 month average



date	home		away		venue	pred.home	pred.away
2017-04-09	WPFC White G03	3	Kent United Green G03	1	2016 WYS Presidents Cup G03 Division 2	1.04	0.90
2017-04-01	Eastside FC Blue G03	0	Kent United Green G03	0	2016 WYS Presidents Cup G03 Division 2	1.23	0.73
2017-03-26	Kent United Green G03	0	Whatcom FC Rangers Blue G03	0	2016 WYS Presidents Cup G03 Division 2	0.60	0.84
2016-12-04	Kent United Green G03	1	FME Fusion G03	2	2016 NPSL Division 1 (03) U14	0.88	1.39
2016-11-19	Southlake Select Patriots G03	2	Kent United Green G03	0	2016 NPSL Division 1 (03) U14	1.23	0.75
2016-11-12	NSC Vipers G03	2	Kent United Green G03	1	2016 NPSL Division 1 (03) U14	0.90	0.79
2016-11-06	Kent United Green G03	0	Southlake Select Patriots G03	0	2016 NPSL Division 1 (03) U14	0.75	1.23
2016-11-05	Kent United Green G03	2	Crossfire Select Cruz G03	0	2016 NPSL Division 1 (03) U14	0.70	0.72
2016-10-29	Seattle United W Blue G03	0	Kent United Green G03	2	2016 NPSL Division 1 (03) U14	0.65	0.75
2016-10-22	FME Fusion G03	2	Kent United Green G03	0	2016 NPSL Division 1 (03) U14	1.39	0.88
2016-10-08	Kent United Green G03	3	NSC Vipers G03	1	2016 NPSL Division 1 (03) U14	0.79	0.90
2016-10-01	Crossfire Select Cruz G03	1	Kent United Green G03	1	2016 NPSL Division 1 (03) U14	0.72	0.70
2016-09-24	Kent United Green G03	1	Seattle United W Blue G03	1	2016 NPSL Division 1 (03) U14	0.75	0.65
2016-09-17	Crossfire Select Tacey G03	1	Kent United Green G03	0	2016 NPSL Division 1 (03) U14	1.14	0.63
2016-09-10	Kent United Green G03	1	Seattle United Shoreline Blue G03	2	2016 NPSL Division 1 (03) U14	0.67	1.55
2016-09-05	Kent United Green G03	2	Seattle United S Blue G03	0	2016 Labor Day Cup GU14 Silver	1.38	1.15
2016-09-04	ISC Gunners B G03	1	Kent United Green G03	0	2016 Labor Day Cup GU14 Silver	0.77	1.51
2016-09-03	Seattle United S Blue G03	0	Kent United Green G03	1	2016 Labor Day Cup GU14 Silver	1.15	1.38
2016-09-02	Kent United Green G03	2	MIFC Lightning G03	0	2016 Labor Day Cup GU14 Silver	1.16	0.53
2016-08-28	MVP Marauders White G03	1	Kent United Green G03	0	2016 River Jam Samba U14	0.69	1.22
2016-08-27	Kent United Green G03	2	Olympia Revolution G03	0	2016 River Jam Samba U14	2.16	0.18
2016-08-27	Kent United Green G03	2	SGESC Fusion Navy G03	0	2016 River Jam Samba U14	0.70	1.15
2016-08-26	Emerald City FC Green G03	1	Kent United Green G03	0	2016 River Jam Samba U14	0.40	2.33
2016-07-24	Kent United Green G03	1	PCU Red 1 G03	0	2016 Crossfire Select U14	0.50	0.75
2016-07-23	Kent United Green G03	1	Seattle United Shoreline Blue G03	1	2016 Crossfire Select U14	0.67	1.55
2016-07-23	NSC Vipers G03	0	Kent United Green G03	1	2016 Crossfire Select U14	0.90	0.79
2016-07-22	Mukilteo Rush G03	0	Kent United Green G03	3	2016 Crossfire Select U14	0.18	4.37
2016-07-10	West Seattle En Fuego G03	2	Kent United Green G03	1	2016 KCC GU14	1.14	0.83

date	home		away		venue	pred.home	pred.away
2016-07-09	West Narrows FC Blue G03	1	Kent United Green G03	1	2016 KCC GU14 B	0.49	2.13
2016-07-09	Kent United Green G03	3	Irish FC Bandits G03	0	2016 KCC GU14 B	7.38	0.34
2016-07-08	Kent United Green G03	0	MVP Marauders White G03	1	2016 KCC GU14 B	1.22	0.69
2016-06-19	Kent United Green G03	5	Harbor Premier White G03	2	2016 Snohomish United Invit Silver	3.68	0.28
2016-06-19	Fuerza FC Academy A G03	2	Kent United Green G03	3	2016 Snohomish United Invit Silver	0.76	1.26
2016-06-18	Snohomish United Red G03	0	Kent United Green G03	5	2016 Snohomish United Invit Silver	0.44	2.14
2016-06-18	Eastside FC Grey G03	1	Kent United Green G03	3	2016 Snohomish United Invit Silver	0.91	0.92